



# INTRODUCTION TO BK CONSULTANTS

BK CONSULTANTS (PRIVATE) LIMITED



# SEQUENCE OF PRESENTATION



- Company overview
- Mission statement
- Organogram
- Area's of expertise
- Executed projects
- Key staff
- Our Client

# OVERVIEW



- BK CONSULTANTS (PVT) LTD is a progressive and dynamic engineering consulting firm.
- BK Consultants offers high-tech engineering consulting services in general & specialized fields.
- Working multi-disciplinary projects that require careful planning, creative engineering, innovative design & architecture, responsive communication and project management.
- Our projects are led by qualified, dedicated and energetic engineers.



# ABOUT US



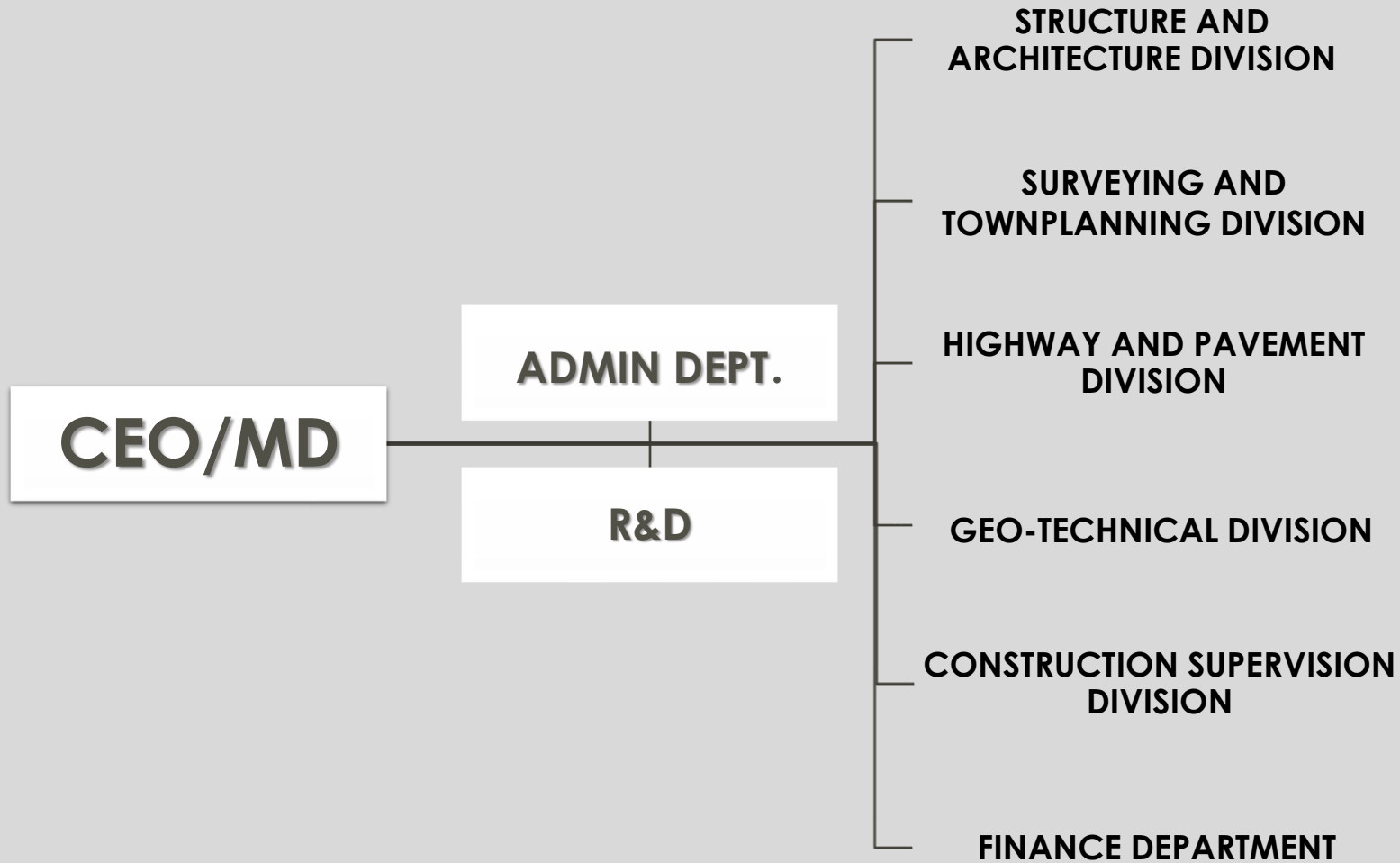
Company	BK Consultants (Pvt) Limited
Chief Executive Officer (CEO)	Dr. Babar Khan, PhD, P.E.
Managing Director (MD)	Engr. Madiha Saeed, P.E.
PEC No.	Consult/1600
PEC Project Profile Codes	1201 (Building), 1203, 1204, 1215
Company Registration with SECP	2013
Office Address	BK Office, 2 <sup>nd</sup> Floor, Al-Kousar Plaza, G-10 Markaz, Islamabad
Contact	Ph No. +92-51-2740011, Cell No. +92-345-9623303
Website/Email:	Web: <a href="http://bkconsultants.com.pk">bkconsultants.com.pk</a> <a href="mailto:bk.consultant.pk@gmail.com">bk.consultant.pk@gmail.com</a> ; <a href="mailto:info@bkconsultants.com">info@bkconsultants.com</a> ,

## MISSION STATEMENT

Our core aim is to make a sustainable difference to the Pakistan Infrastructure where we live in by understanding our customers and to deliver outcomes that add value through **innovative** approaches



# ORGANOGRAM



# AREAS OF EXPERTIES



Urban planning,  
traffic studies  
management



Architectural & Structural Design



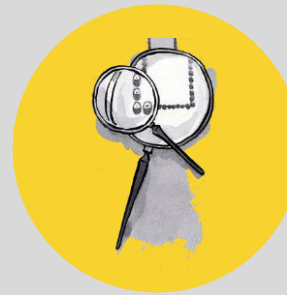
Highway & Pavement Design



Surveying and  
Mapping (GIS),



Geotechnical Studies



Detailed engineering designs,  
and estimation, preparation of  
feasibility studies,  
contract/tender documents,



Project management,  
Contract administration,  
and construction  
supervision,

01

## TOWNPLANNING AND INFRASTRUCTURE SERVICES





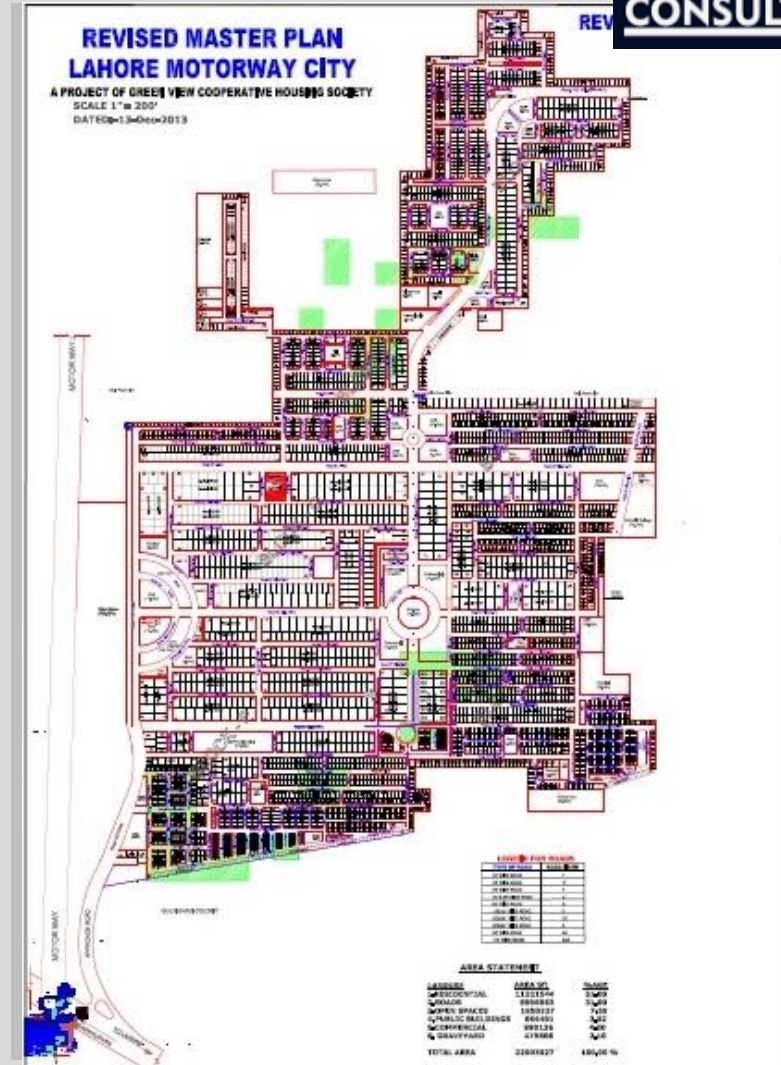
# LAHORE MOTORWAY CITY, LAHORE



## LAHORE MOTORWAY CITY, LAHORE

Detail Design of

- Roads (Main Boulevards & Sector Roads)
- Sewerage
- Water Supply System
- Surface Drainage
- Pump Stations
- Overhead Tanks

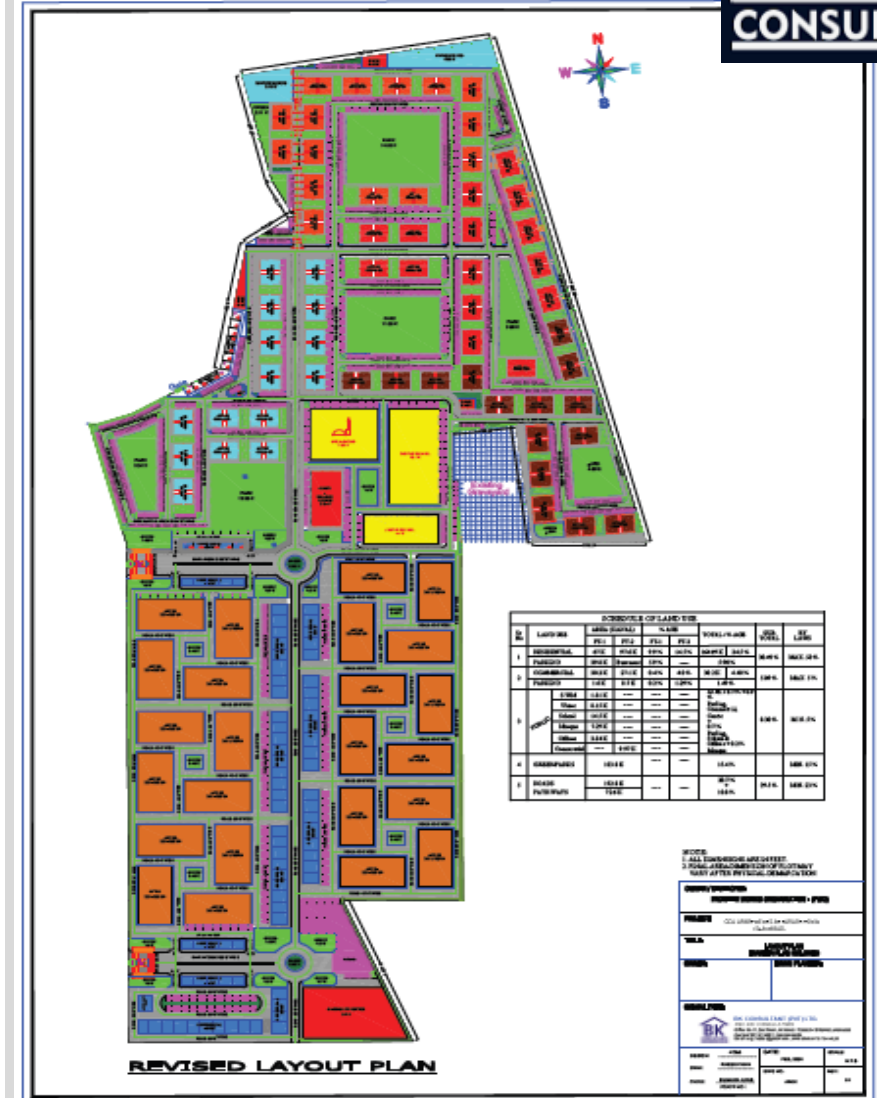




# FARASH TOWN, NILORE, ISLAMABAD



## PLANNING & DESIGN OF FARASH TOWN, PHASE-II, NILORE, ISLAMABAD





# FARASH TOWN, NILORE, ISLAMABAD





# NHA RESIDENTIAL COMPLEX AT M-1/M-2 LOOP, ISLAMABAD



## TOWN PLANNING & DESIGN OF NHA RESIDENTIAL COMPLEX.

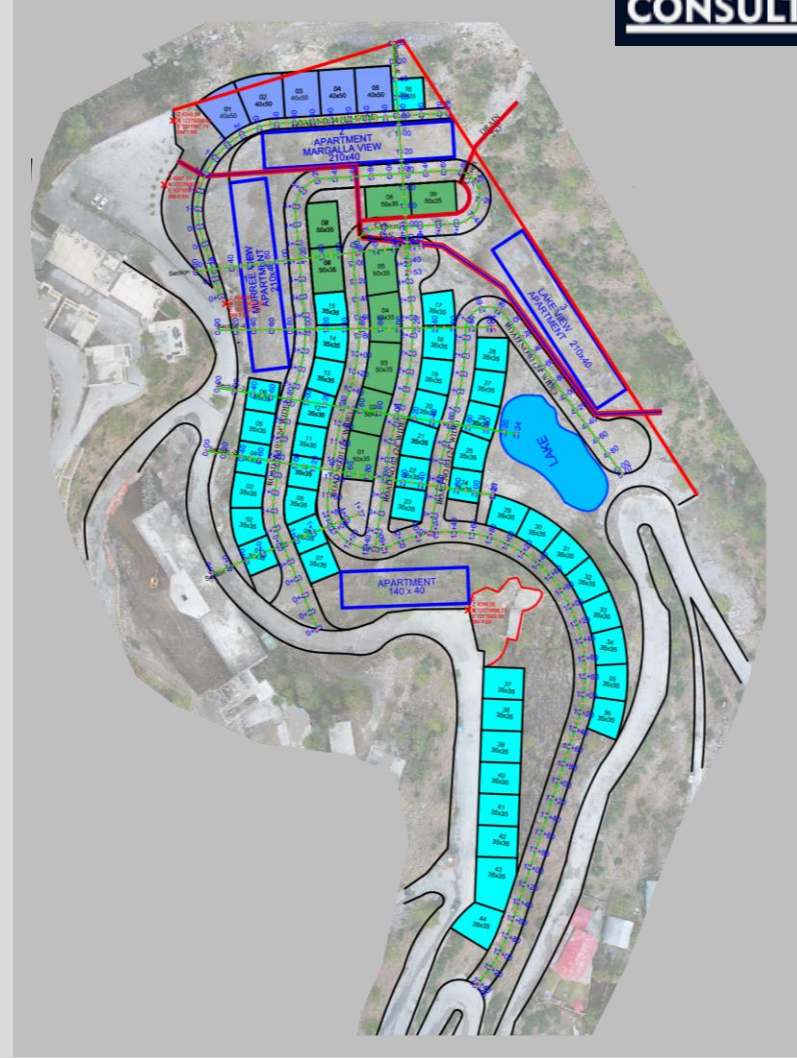




# HIGHLAND RESORT AT PIRSOHAWA, ISLAMABAD



Planning & Design of  
Highland Resort at  
Pirsohawa



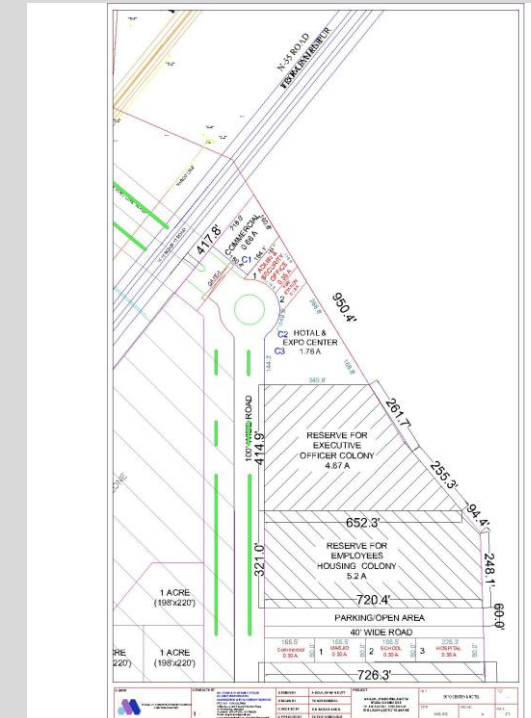
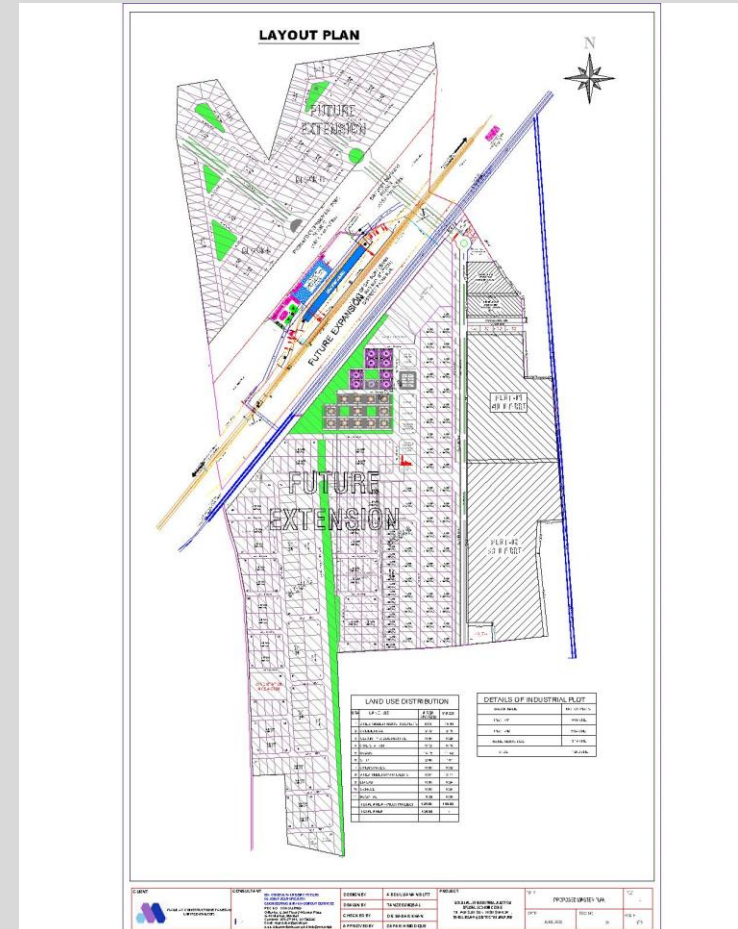
# INDUS VALLEY INDUSTRIAL JUNCTION (SEZ), RAJANPUR



## INDUS VALLEY INDUSTRIAL JUNCTION SPECIAL ECONOMIC ZONE VILLAGE SURI, DISTRICT RAJANPURE

Detail Town Planning of

- Roads (Main Boulevards & Sector Roads)
- Sewerage
- Commercial buildings
- Expo-Center
- Dry-Port
- Residential apartments
- Hotel
- Hospital
- Mosque





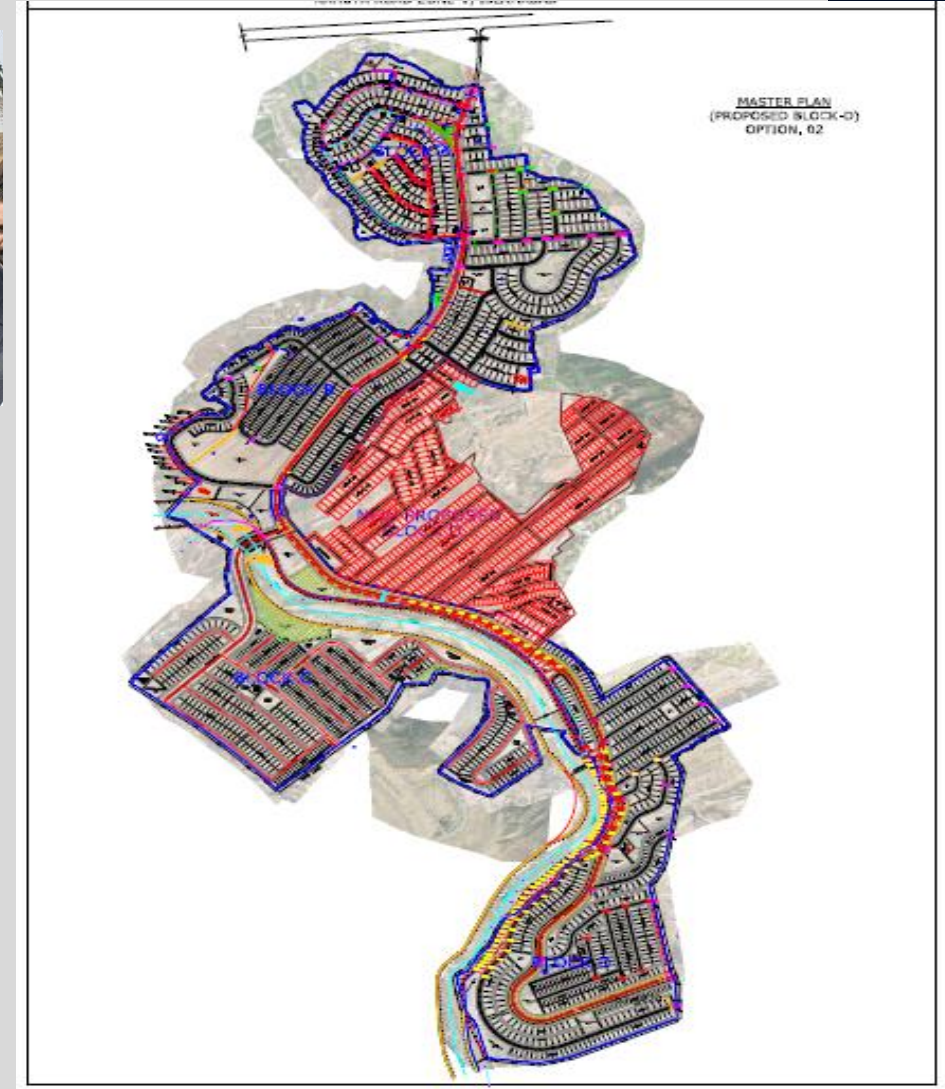
# NATIONAL HIGHWAY FOUNDATION (NHF) ISLAMABAD



## NATIONAL HIGHWAY FOUNDATION-HOUSING SOCIETY

### MASTER PLANNING & DESIGN REVIEW OF

- Roads (Main Boulevards & Sector Roads)
- Sewerage
- Water Supply System
- Surface Drainage
- Pump Stations
- Overhead Tanks





# NHA COMMERCIAL COMPLEX, SINGHANI, N-5, ISLAMABAD



## NATIONAL HIGHWAY FOUNDATION-HOUSING SOCIETY

- Layout plan
- Master planning
- Architecture
- Structure Design
- Geotechnical Desing
- Services Design





# GOVERNMENT GIRLS DEGREE COLLEGE, OGI, MANSEHRA



## GOVT. GIRLS COLLEGE

- Layout plan
- Master planning
- Architecture
- Structure Design
- Geotechnical Desing
- Services Design





# WORLD GREEN RESIDENCIA, ISLAMABAD



## WORLD GREEN

- Layout plan
- Master planning
- Architecture
- Structure Design
- Geotechnical Desing
- Services Design



The background of the slide is a light gray color with a faint, repeating pattern of dark gray architectural drawings. These drawings include various geometric shapes, lines, and hatching, typical of technical or architectural sketches. The pattern is centered and covers the entire background.

02

## ARCHITECTURAL AND STRUCTURAL SERVICES



# ARCHITECTURAL & STRUCTURAL DESIGN SERVICES



BK consultants provides the state of art services in Architecture & Structures by using modern techniques “Building Information Modelling” (BIM) in following fields :

S. No.	Services Descriptions	Software/Tools use
a.	Detailed Architectural Planning of all building typology	Hand Sketching and Revert (BIM)
b.	Buildings Elevation design/3d Model	Sketchup, AutoDesk 3D Max
c.	Realistic Render of the project	Lumion/Vray
d.	Structural design	ETABS, CSI BRIDGE
e.	Foundation design	SAFE, Plaxis 3D

The background of the slide is a detailed architectural floor plan, likely of a large building or complex. It features various rooms, corridors, and structural elements, rendered in a dark grey or black color on a light grey background. The plan is oriented diagonally, with the main entrance or central area towards the top left. The text "HIGHRISE AND COMMERCIAL" is centered in the middle of the slide, underlined.

## HIGHRISE AND COMMERCIAL



# NILORE HEIGHTS APARTMENTS FARASH TOWN HOUSING SCHEME ISLAMABAD





# NHA COMMERCIAL COMPLEX





# NHA RESIDENTIAL COMPLEX, ISLAMABAD



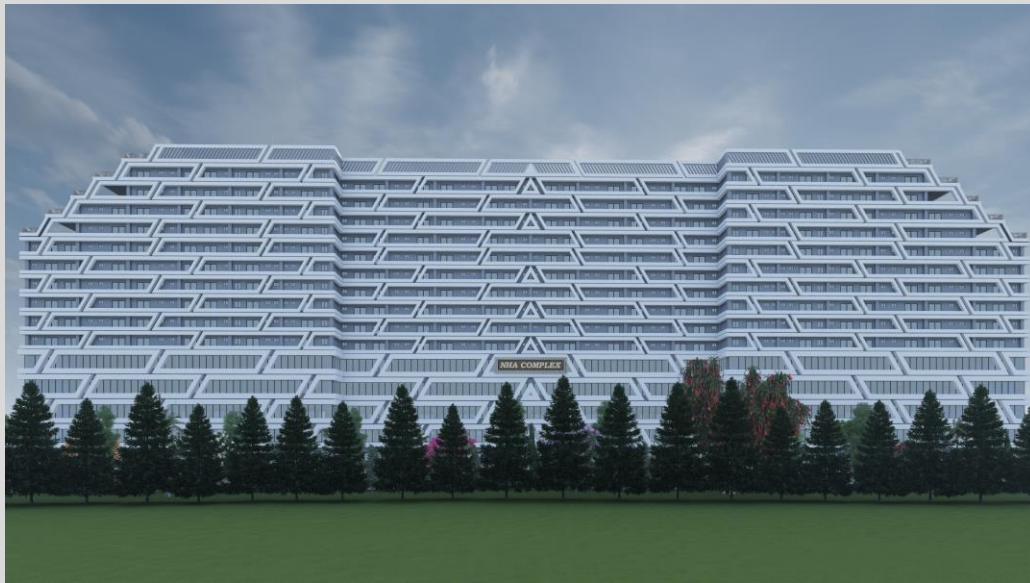


# NHA OFFICE AT BARKHU, ISLAMABAD



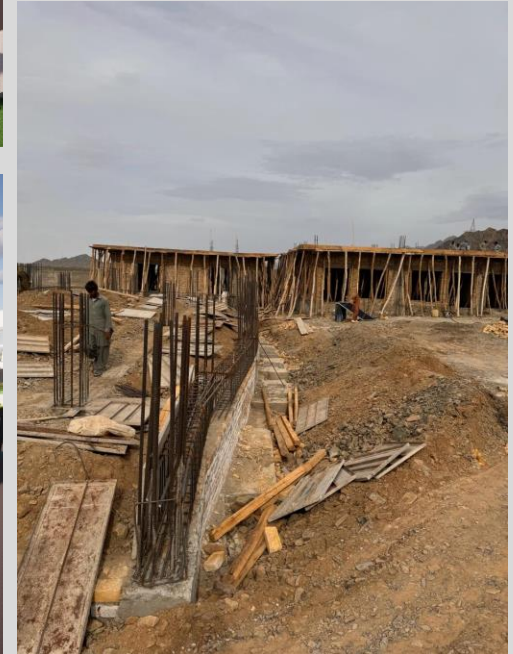


# NHA COMMERCIAL COMPLEX AT SINGHANI, N-5, ISLAMABAD





# N-65 REST AREA'S AT NUSHKI, NOKUNDI AND PADAK





# THE RESIDY AT MURREE



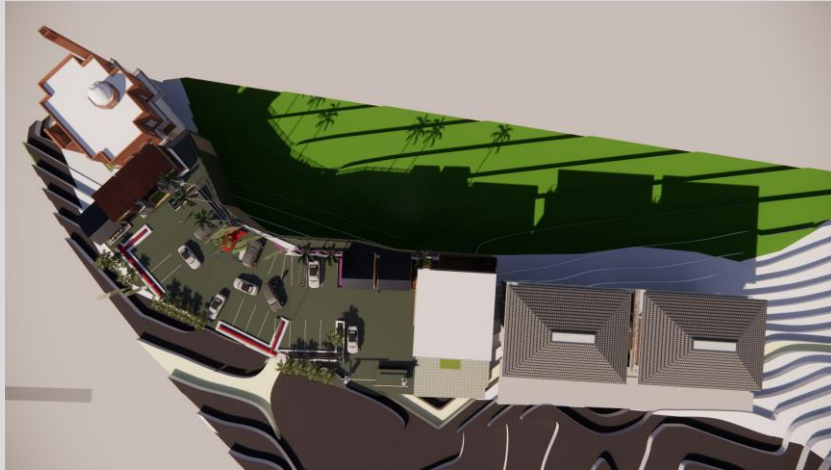


# MOSQUE DESIGN AT NATIONAL HOUSING FOUNDATION (NHF)





# MINI REST AREA, NHA, MURREE



The background of the slide is a detailed architectural floor plan, likely of a residential building. It features various rooms, corridors, and structural elements, rendered in a dark gray color on a light gray background. The plan includes walls, doors, windows, and furniture like beds and tables, all represented by standard architectural symbols and lines. The layout is complex, with multiple interconnected spaces.

# RESIDENTIAL



# 20 KANAL FARM HOUSE AT HAIPUR FOR DR.FAIZA RASHEED





# 2 KANAL RESIDENCE AT BAHRIA ENCLAVE FOR DR.AMIR





# 1 KANAL RESIDENCE AT MARDAN FOR MR.SABIR





# 1 KANAL RESIDENCE AT TOP CITY FOR MR FASIH ULLAH





# 1 KANAL RESIDENCE AT TOP CITY



# ARCHITECTURAL & STRUCTURAL DESIGN SERVICES



Architecture &  
Structural Design of  
Academic &  
Administration  
Blocks of Govt.  
Model School at  
Mansehra

2013

Structure Design of  
Reconstruction of  
Govt. Girls College,  
Mansehra, Damage  
Due To Earthquake.

2014

Structure Design of  
Academic , Admin,  
Hostel, Auditorium,  
Cafeteria, Faculty  
Suits, 10,000 Gallons  
OHWT of Govt. Girl  
College Oghi, (KPK)

2014

Structural Design &  
Architecture of  
School for Deaf and  
Dumb, Peshawar

2015

Structural Design &  
Architecture of  
Public Prosecutor  
Offices, Swabi

2015





02

## **DESIGN, DESIGN REVIEW & CONSTRUCTION SUPERVISION OF BRIDGES**





# PROJECTS OF DESIGN, DESIGN REVIEW & CONSTRUCTION SUPERVISION OF BRIDGES



1. Consultancy Services for Design of Kayal Bridge at Km 266+000 on N-35 of National Highway Authority.
2. Design review of Road & Bridges, Slope Stability of landslide prone reaches, including Construction Supervision, design mega structures like Avalanches galleries, Tunnels & Bridges for Re-aligned portion of Mansehra-Naran-Jalhad-Chilas project (N-15) of National Highway Authority.
3. Consultancy Services for Design Review/ Vetting of Leswa Bypass Road Length 13 Km (Damaged Portion) Incl. Bridges/ Allied Structures, District Neelum.
4. Detailed Design of Road & Bridges including Construction Supervision of N-50 section near Darban.
5. Rehabilitation of Existing Nullah Lai Sawan Bridge.
6. Detailed Design of Road & Bridges including Construction Supervision of Muzaffarabad-Chakothei Road Project (S-3) of National Highway Authority.





# PROJECTS OF DESIGN, DESIGN REVIEW & CONSTRUCTION SUPERVISION OF BRIDGES

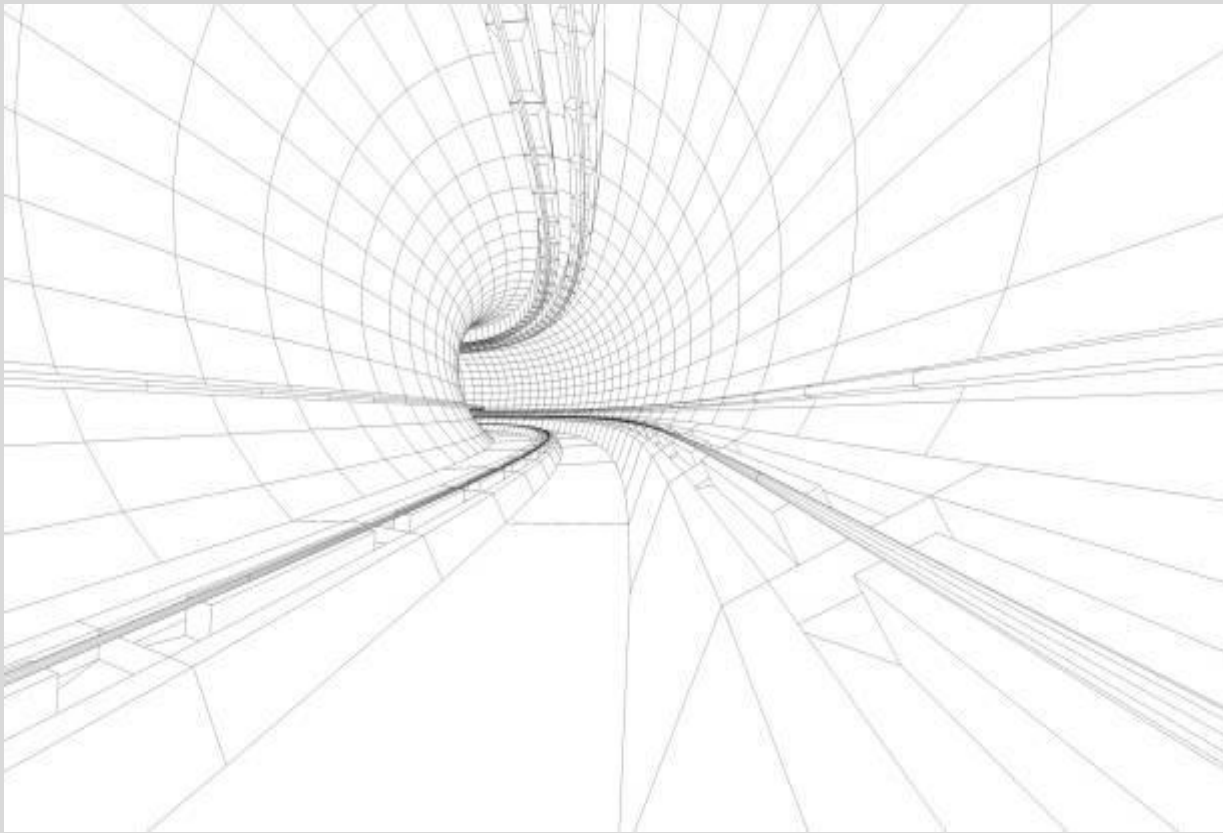


7. Detailed Analysis, Design Review of Road Pavement & Bridges, Slope Stability of Landslide prone stretches including Construction Supervision for Islamabad-Muzaffarabad Dual Carriageway project (Murree Expressway N-75) of National Highway Authority.
8. Detailed Analysis, Design Review of Road Pavement & Bridges, Slope Stability of Landslide prone reaches including Construction Supervision for Kohala-Muzaffarabad Expressway project (S-2) of National Highway Authority.
9. Detailed Analysis & Design Review of Existing Damaged Bridge Structures, Providing adequate Rectification Design & Drawings including Construction Supervision of Rectification Works on KKH (N-35) between section (Besham-Sazin) of National Highway Authority.



03

## GEO-TECHNICAL/TUNNEL SERVICES





# GEO-TECHNICAL STUDIES



BK consultants provides the state of art services by using modern techniques in following fields :

S. No.	Services Descriptions	Software/Tools use
a.	Design of Shallow and Deep Foundations	Foundation Analysis & Design By Joseph E. Bowles
b.	Slope Stability	<b>FEM:</b> Slide, Dip (rocscience), Plaxis 3D (Bentley Systems) <b>FDM:</b> FLAC 3D (Itasca)
c.	Geotextile Reinforced Slope	<b>FEM:</b> Slide(rocscience) <b>FDM:</b> FLAC 3D (Itasca)
d.	Embankment Design	<b>FEM:</b> Slide(rocscience), Plaxis 3D (Bentley Systems)
e.	Settlement Analysis	<b>FEM:</b> Settle 3D (Bentley Systems), Plaxis 3D (Bentley Systems)
f.	Tunnels & Dams	<b>FEM:</b> Phase <sup>2</sup> (rocscience) <b>FDM:</b> FLAC 3D (Itasca)

# GEO-TECHNICAL STUDIES EXECUTED PROJECTS



Geotechnical Investigation of Naya Pakistan Housing Scheme, Phase-IV, Angori Road, Islamabad



Extension of Ammar Shaheed Chowk, Rawalpindi  
Client: FWO



Islamabad

Islamabad

Islamabad

Kamra ,Islamabad &  
Multan



Geotechnical Investigation of Naya Pakistan Housing Scheme at Sang Jani, Islamabad.



Geotechnical Investigation of Air University Campus at Islamabad (H-12), Kamra & Multan



# GEO-TECHNICAL STUDIES EXECUTED PROJECTS



Complete  
Geotechnical  
Investigation of  
Eighteen Housing  
Society, Islamabad

Dr. Abdul  
Qadeer Khan  
School  
System,  
Bahria Town

Ghani Mall GT  
Road ,  
Rawalpindi

Capital Icon  
Capital Enclave  
Islamabad

Tortonas Uzghor  
Hydro Electric  
power  
Projects, Chitral

- Margalla Hills-II
- Tuba Heights
- Saud Heights  
E-11  
Islamabad

**Islamabad**

**Bahria Town**

**Rawalpindi**

**Islamabad**

**Islamabad**

**Islamabad**

Gulberg Arena,  
Gulberg Greens,  
Islamabad

- Grand Hotel
- High Rise  
Street (Near  
KFC)  
Phase VII, Bahria  
Town Rawalpindi

Square-5,  
Elish Empire,  
Al-Jabbar  
Plaza, B-17  
Islamabad

Time Square  
Residence, Top  
City-1, Islamabad

- Madina Mall
- Embassy Garden
- The Shaikh Mall
- Gateway Plaza  
Bahria Enclave  
Islamabad

1 & 2, Faisal  
square, Tower  
45, Aviation  
Arcade, Faisal  
Town

# SLOPE PROTECTION MEASURES

## EXECUTED PROJECTS



### IMDC

Design of Slope Protection Measures at KM 26, 28, 30 of N-75 (IMDC)



### Muzaffarabad

Design of Slope Protection Measures at KM 12, 17, & 27 of S-2 (Kohala - Muzaffarabad)

Design of Slope Protection Measures at KM 89, 96 & 97 of N-15 (Kaghan)

### Kaghan



Design of Slope Protection Measures at Different Site of Bahria Town, Islamabad/Rawal pindi

### Islamabad





# SLOPE PROTECTION MEASURES

## EXECUTED PROJECTS



### Islamabad

Design of Slope  
Protection Measures at  
Restaurant  
(Chai Cup & Gupshup)



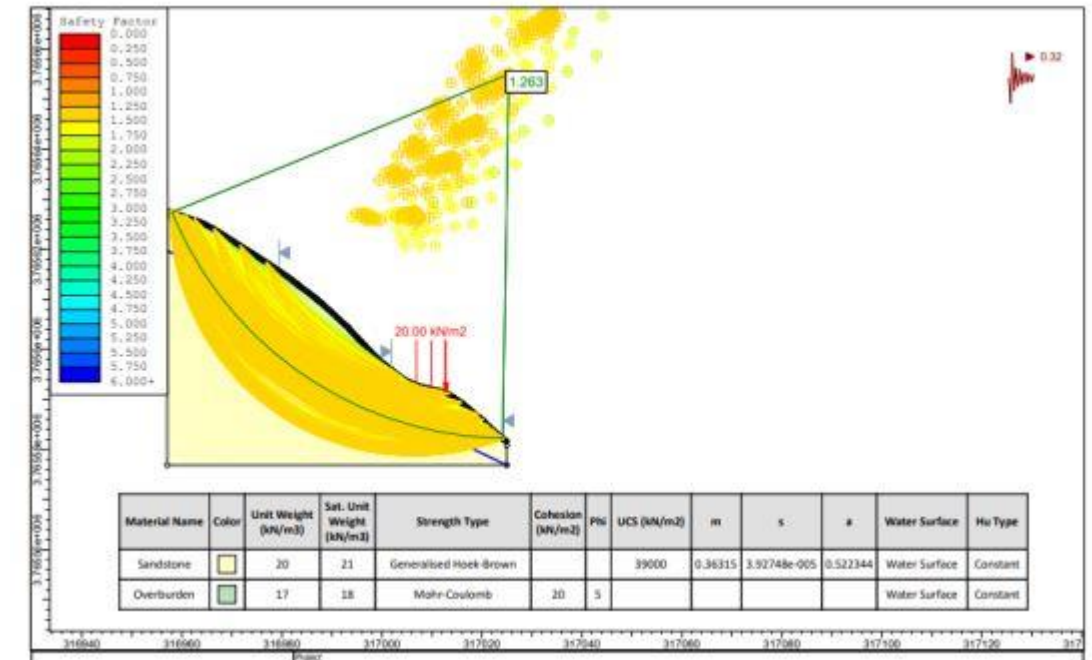
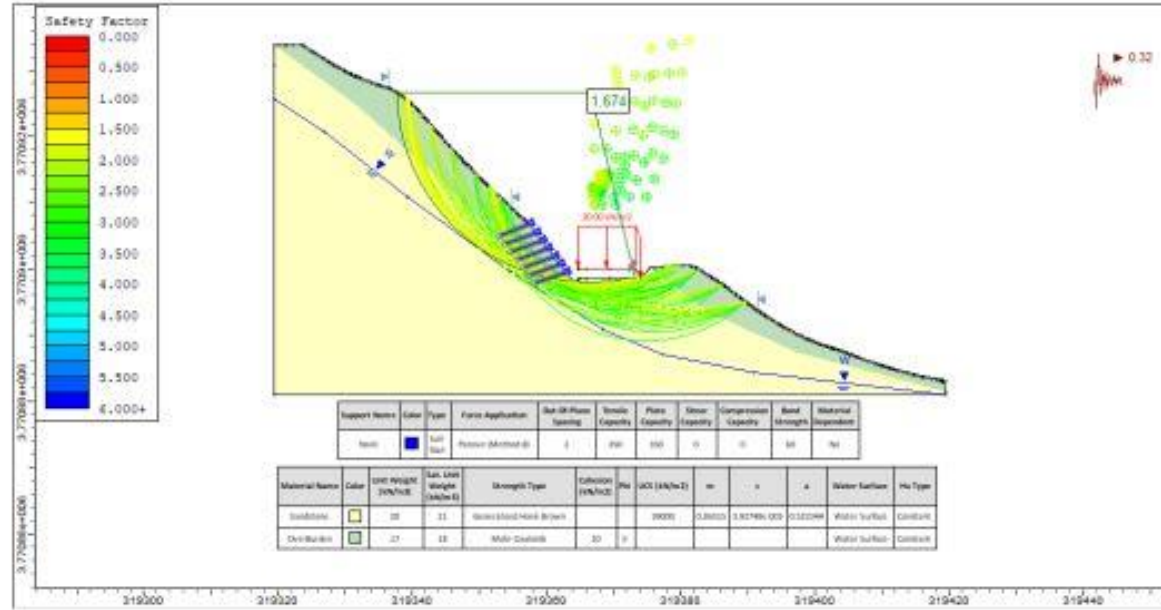
### Sharkool

Design of Slope  
Protection Measures at  
KM 104 at N-35  
(Sharkool)



# SLOPE PROTECTION MEASURES

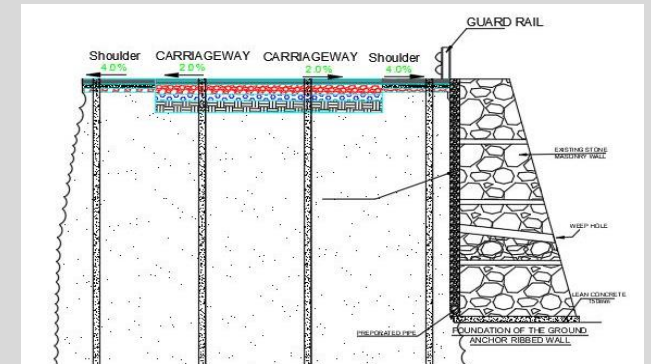
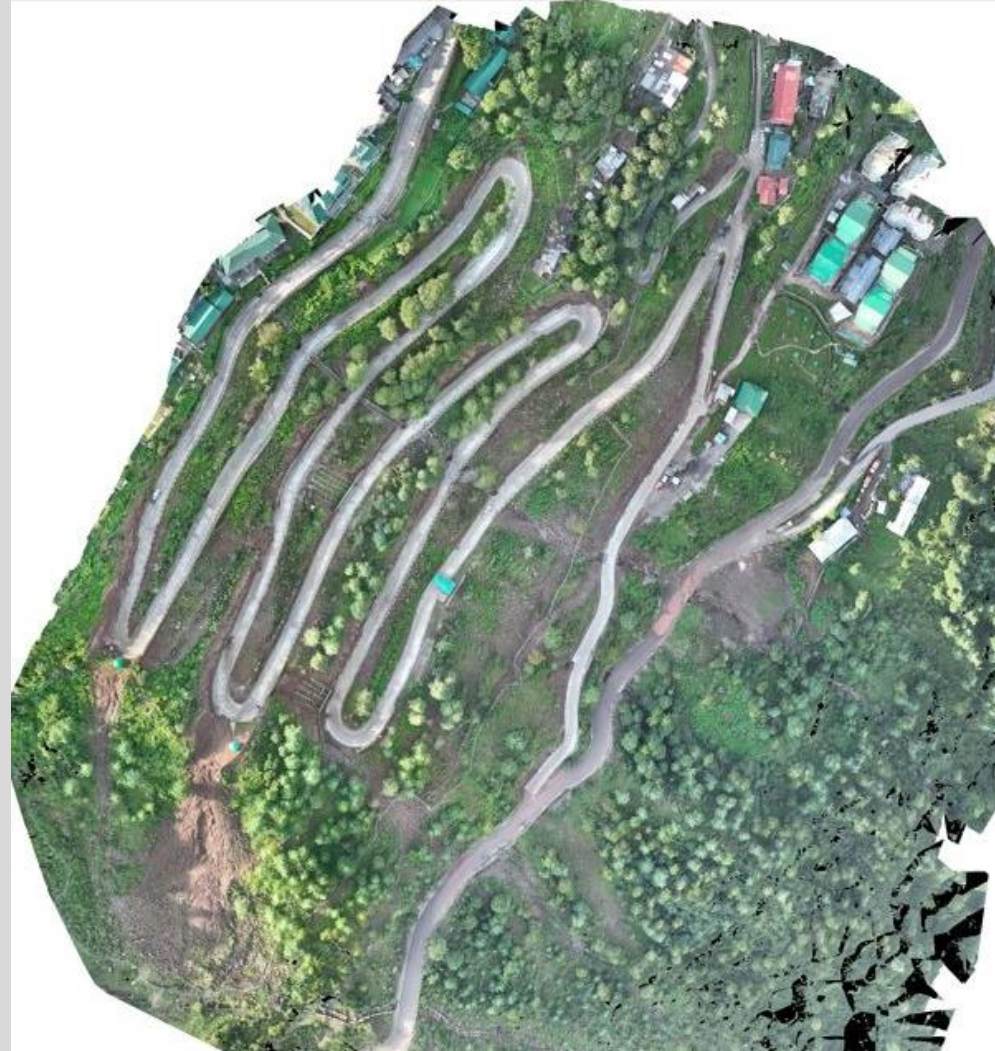
## KASHMIR HIGHWAY ALONG RIVER JHELM





# SLOPE PROTECTION MEASURES

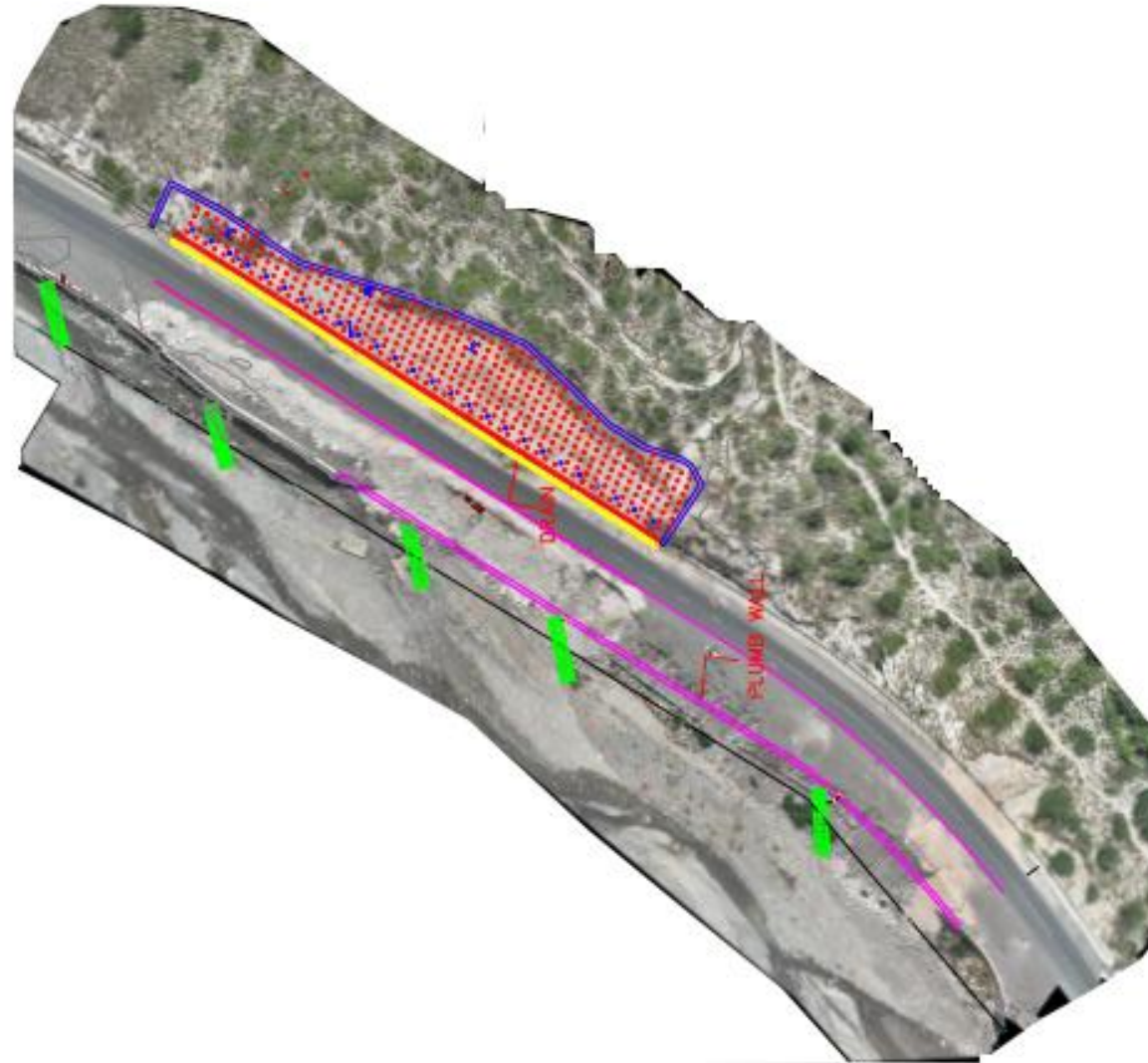
## ARMY CHINAAR CAMP 12 DIV MURREE





# SLOPE PROTECTION MEASURES

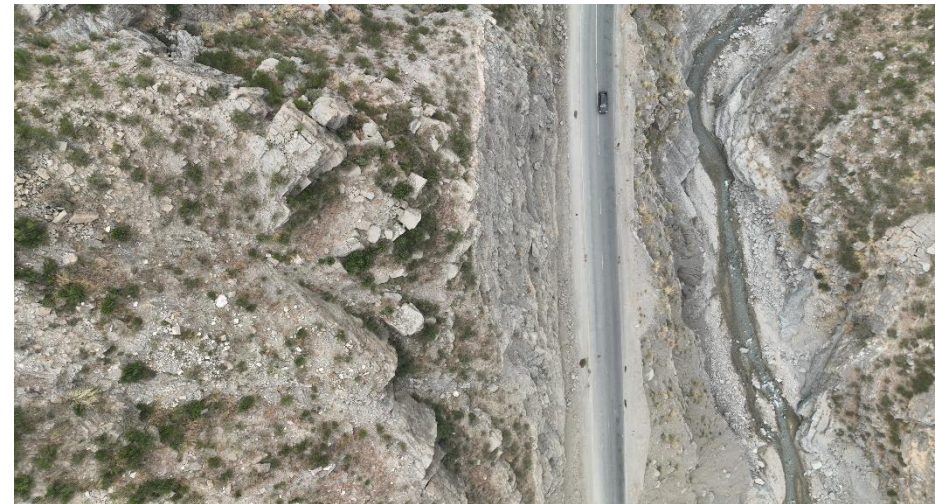
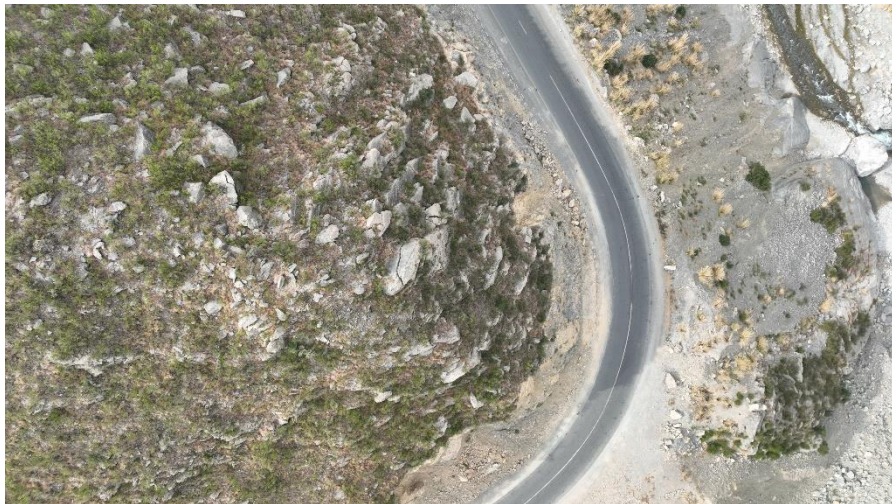
N-50





# SLOPE PROTECTION MEASURES

## ZHOB-DHANASSAR N-50 KM 375+000 TO 380+000





# SLOPE PROTECTION MEASURES

KM 44+000





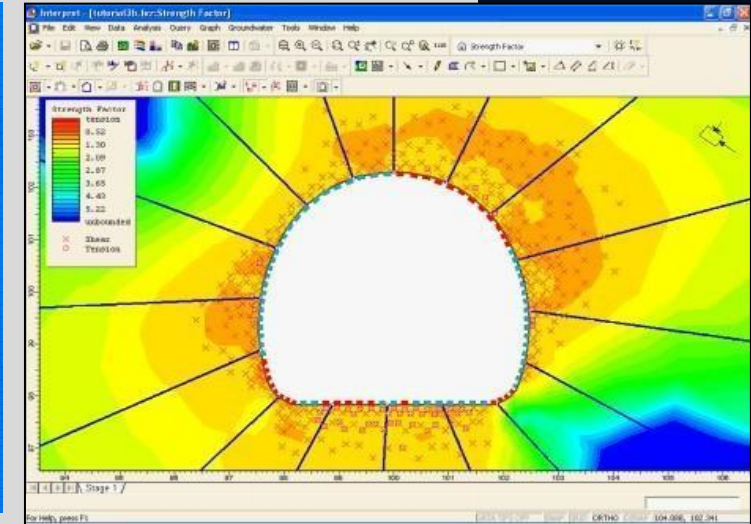
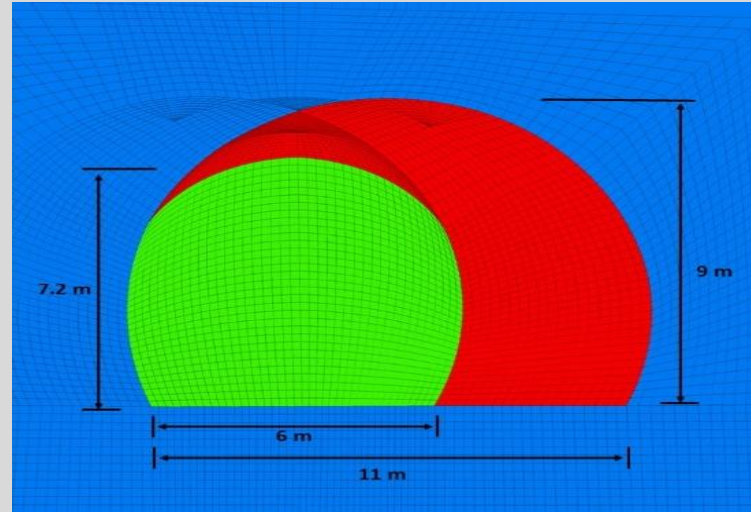
# SLOPE PROTECTION MEASURES

## EXECUTED PROJECTS



# TUNNEL WORKS

- BK Consultants has provides the state of art solutions for tunnel technology by using modern technique.
- To provide the field testing including in-situ testing comprises of core drilling, geophysical investigation.
- Reconnaissance and topographic survey.
- Scanline geological survey.
- Development of structural geology by using stereo net and rose diagram.
- Rock mass classification
- Simulation of tunnel opening keeping in view the geological conditions and field stresses.

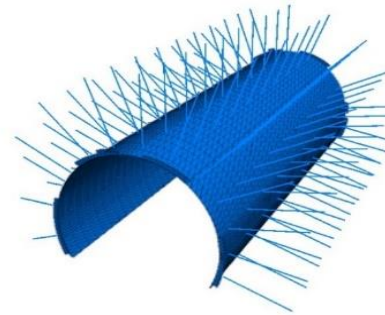


**FLAC3D 5.01**  
©2017 Itasca Consulting Group, Inc.  
Step 11001  
3/8/2019 9:33:06 AM

**Zone**  
Colorby: Group Any  
initial\_tunnel  
rock\_mass  
widened\_tunnel

**Shell**  
Colorby: Uniform  
Uniform

**Cable**  
Colorby: Uniform  
Uniform

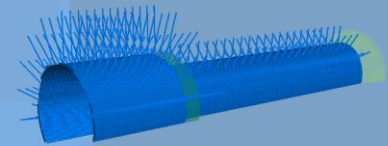


**FLAC3D 5.01**  
©2017 Itasca Consulting Group, Inc.  
Step 47819  
5/15/2019 6:57:41 AM

**Zone**  
Colorby: Group Any  
initial\_tunnel  
rock\_mass  
widened\_tunnel

**Shell**  
Colorby: Uniform  
Uniform

**Cable**  
Colorby: Uniform  
Uniform





# TUNNEL WORKS

Design Review and Supervision of 4.9 Km Road including 500 m Tunnel at N-15 at Sukki Kinari Hydropower Project, Naran, Pakistan.



Golen Gol Hydropower Project – Review the tunnel lining design for M/s SAMBU



**Sukki Kinari  
Hydropower Project**

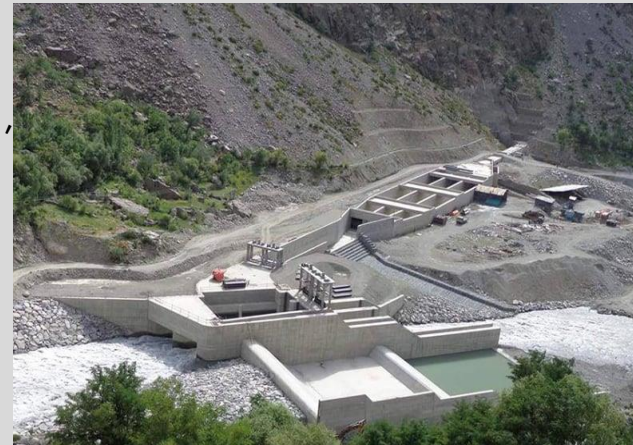
**Golen Gol, Chitral**

**Golen Gol  
Hydropower,  
Chitral**

**Lowari Tunnel**

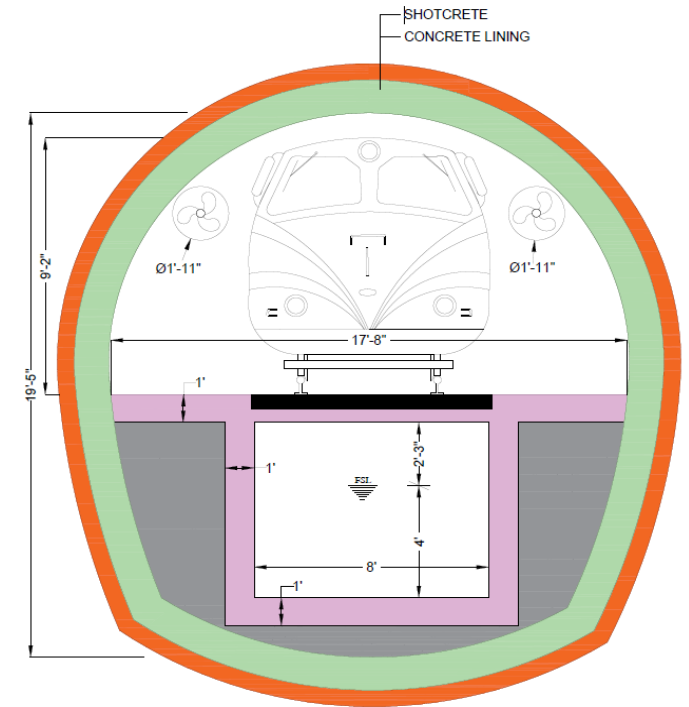
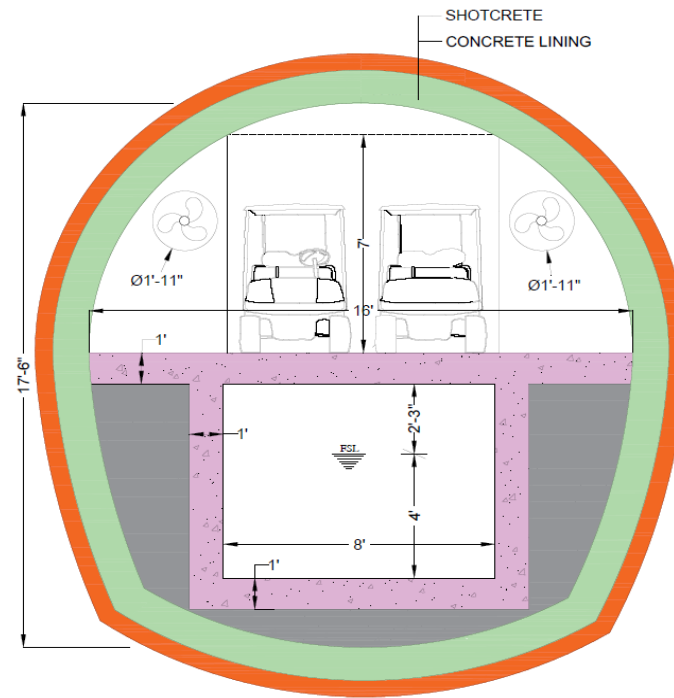
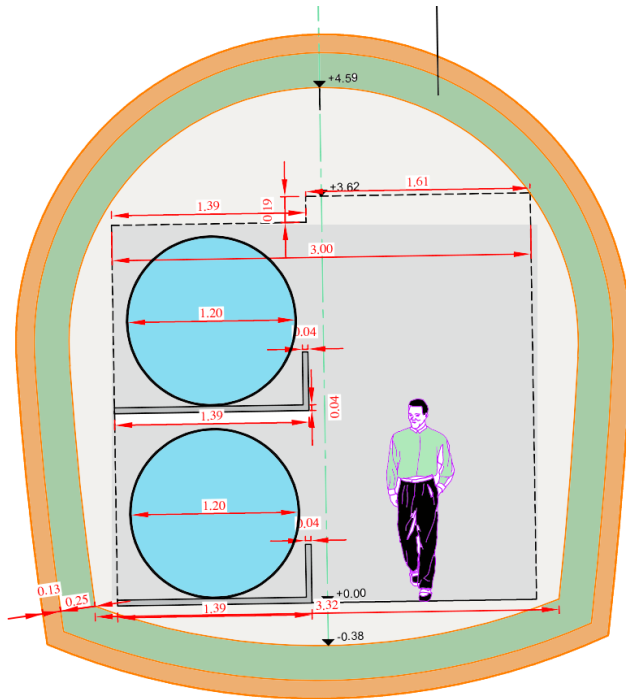


Turtonas Uzghor Hydro Power project, Golen Gol, Chitral, Detailed Geotechnical and Topographic Survey.



Lowari Tunnel Project, Top Supervision and Contract Administration

# DESIGN OF HEADRACE TUNNEL AT CHITRAL MULKHOW





04

## HIGHWAY AND PAVEMENT SERVICES



# HIGHWAY AND PAVEMENT



BK consultants provides the state of art services by using modern techniques (BIM) in following fields :

S. No.	Services Descriptions	Software/Tools use
a.	Highway Geometrics	AutoCAD Civil 3D, Autodesk InfraWorks (BIM)
b.	Pavement Design	BISAR, Kenlayer, AASHTO Design Method
c.	Land Survey	UAV, GIS, GPS & Total Station
d.	Pavement Drainage	DRIP-2.0



# HIGHWAY AND PAVEMENT EXECUTED PROJECTS



## LAHORE MOTORWAY CITY, LAHORE

Detail Design of

- Roads (Main Boulevards & Sector Roads)
- Sewerage
- Water Supply System
- Surface Drainage
- Pump Stations
- Overhead Tanks



# HIGHWAY AND PAVEMENT EXECUTED PROJECTS



- Design Review of Re-aligned Portion of N-15 at 884 MW Sukki Kinari Hydro Power Project
- Design of Embankment Settlement Remedial Measures at Hazara Motorway (E-35) at five locations





# HIGHWAY AND PAVEMENT



- Feasibility Study and Detailed Design for Rehabilitation/Upgradation and Widening of Quetta – Dhadhar Section of N-65 (118 Km)
- Feasibility Study and Detailed Design for Dualization/Strengthening of Dhadar – Jacobabad Section N-65 (188 Km).





Feasibility Study and Design of Kashmir Highway  
along Jehlum Length 140 Km

Design of Muzaffarabad 1.5 KM road from Km  
32+125 to KM 33+519 (S-2)





05

## CONSTRUCTION SUPERVISION SERVICES



# CONSTRUCTION SUPERVISION

## EXECUTED PROJECTS



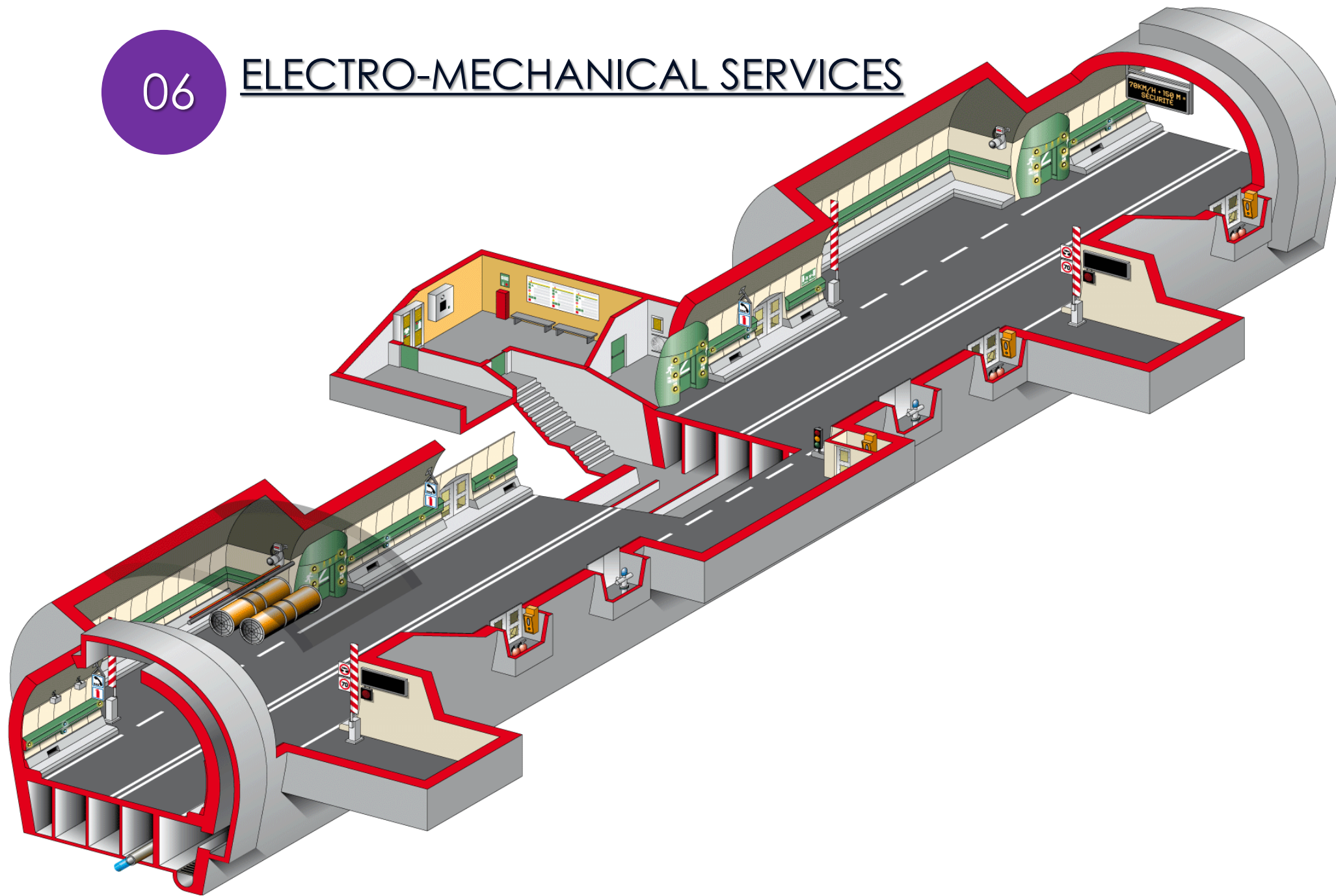
- Construction Supervision of Re-aligned Portion of N-15 at Sukki Kinari Hydro Power Project
- Construction Supervision of Govt Degree College Oghi, Mansehra.
- Construction Supervision of National Highway Foundation Housing Scheme (NHF-HS), Islamabad
- Construction Supervision of Different Slope Stability Projects.





06

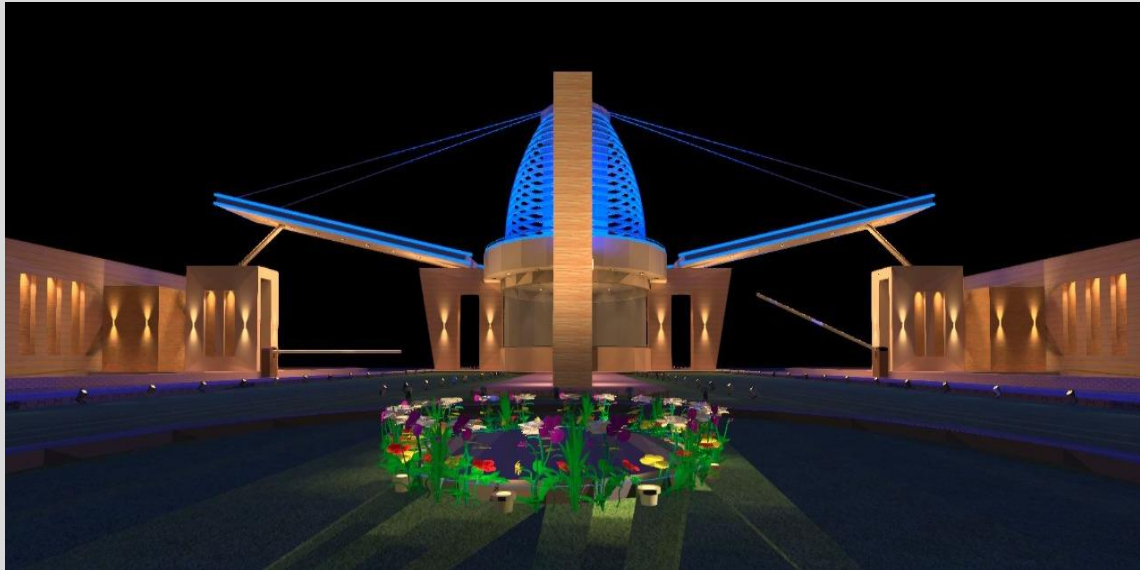
## ELECTRO-MECHANICAL SERVICES



# ELECTRO-MECHANICAL EXECUTED PROJECTS



- Automated Lighting Design of Gate at Bahria Agro Farms Housing Scheme, Islamabad





07

## HYDROLOGY & HYDRAULIC SERVICES



# HYDROLOGY & HYDRAULICS



BK consultants provides the state of art services by using modern techniques in following fields :

S. No.	Services Descriptions	Software/Tools use
a.	Digital Elevation Modeling (DEM)	Google Earth, USGS earth Explorer
b.	Land use Land cover classification	Global Mapper, ArcGIS
c.	Watershed Modeling	WMS 11.0
d.	Bridge & Culvert design	HEC-RAS




### HYDRAULIC STUDY OF DHANA-SAR PROJECT

Detail Design of

- Culverts
- Chute
- Aqueducts



## COMPLETED PROJECTS



A stylized illustration of a construction site. On the left, a tall white crane stands next to a dark blue building with white windows. A worker in a white uniform stands on the building. In the center, a worker in an orange uniform holds up a large grey puzzle piece. To the right, a large black crane is lifting a grey puzzle piece. In the foreground, there are several workers in orange uniforms, a yellow car, a yellow truck, and a yellow excavator. The background is a light grey gradient.



## EXECUTED PROJECTS



Sr. No.	Name of the Project	Location Province / Country	Client
1	Design Review and Supervision including Slope Protection Measures, Avalanche Galleries, Tunnel of Re-Aligned Portion N-15 NHA Highway (At Km 107- Km 112) at Sukki Kinari Hydropower project at Naran, Mansehra.	Naran, Tehsil: Balakot, Distt: Mansehra (KPK), Pakistan	National Highway Authority (NHA)
2	Turtonas Uzghor Hydro Power project, Golen Gol, Chitral, Detailed Geotechnical and Topographic Survey.	Golen Gol, Chitral	Sachal Engineering Works (Pvt) Limited
3	Feasibility Study For "Improvement and Widening of National Highway N-45 Section II (Akhagram-Dir)"	Akhagram-Dir, N-45, KPK	Dasan Consultants CO., LTD.
4	Design and supervision of Road Networks, Sewerage, Water Supply System and Surface Drainage for Lahore Motorway City, Lahore	Lahore Motorway City, Lahore, Pakistan	Renaissance Developers (Pvt) Limited

## EXECUTED PROJECTS



Sr. No.	Name of the Project	Location Province / Country	Client
5	Design of Mini rest Area of National Highway Authority at Lower Topa Muree.	Murree, Punjab	National Highway Authority (NHA)
6	Detail Design & Supervision of Road at Km 449+300 & Km 449+800 on N-50	Darban, D,I Khan	National Highway Authority (NHA)
7	Analysis and design of foundation along with slope protection of the structure of Nayyah Pakistan Housing Scheme, Phase-IV, Islamabad.	Islamabad	Bahria Town, Islamabad.
8	Detail Design of 3 X Rest Areas for Zaireen at 03 different Location i-e., Noshki, Padak & nokundi on National Highway N-40 Balochistan.	Balochistan	National Highway Authority (NHA)



## EXECUTED PROJECTS



Sr. No.	Name of the Project	Location Province / Country	Client
9	Design of NHA Building for the Maintenance Office of Islamabad-Murree Expressway N-75 at Barakahu.	Barakahu/Murree, Punjab	National Highway Authority (NHA)
10	Detail Design of 1.5 Km Dual Carriageway Road at Kohala Muzaffarabad Highway S-2 from km 32+019 to Km 33+519	Kohala Muzaffarabad	National Highway Authority (NHA)
11	Architectural & Structural Design and supervision of “Reconstruction of Govt. Girls Degree Collage, Mansehra, Damage due to Earthquake”	Mansehra KPK	C&W Department KPK
12	Architectural, Structural Design & Supervision of Government Model Boys School at Mansehra (KPK)	Mansehra KPK	C&W Department KPK

## EXECUTED PROJECTS



Sr. No.	Name of the Project	Location Province / Country	Client
13	Master Planning, Detail Design and Supervision of Govt. Girls College at Oghi, District Mansehra.	Oghi, District Mansehra	Communications & Works Department, Govt of Khyber Pakhtunkhwa
14	Analysis and Design of Slope Stability of Slide at Km 26+000 , Km 30+000, Km 30+800, Km 43+200, Km 44+400, Km 47+280, Km 47+700, Km 49+300, Km 49+860, Km 50+340, Km 54+300 of Islamabad-Murree Dual Carriageway (IMDC) N-75 of National Highway Authority.	Islamabad-Murree Dual Carriageway (IMDC). N-75	National Highway Authority (NHA)
15	Analysis and design of Slope stability measures of the slide at KM 17+000, Km 33+200 of Kohala-Muzaffarabad Expressway (S-2)	Kohala-Muzaffarabad Expressway (S-2), at Azad Jammu Kashmir.	National Highway Authority (NHA)



## EXECUTED PROJECTS



Sr. No.	Name of the Project	Location Province / Country	Client
16	Master Planning, Detail Design and Supervision of Govt. Girls College at Oghi, District Mansehra.	Oghi, District Mansehra	Communications & Works Department, Govt of Khyber Pakhtunkhwa
17	Detail Design & Supervision of Km 5+400, Km 11+600, Km 33+900, Km 42+360, Km 48+010, Km 50+150, Km 50+850, Km 53+300 on Muzaffarabad-Chakothi Road S-3	Muzaffarabad-Chakothi	National Highway Authority (NHA)
18	Analysis and design of Slope stability on Khwzakhela-Besham Highway N-90 at Km 33-34	Khwazakhela-Besham	National Highway Authority (NHA)

## EXECUTED PROJECTS



Sr. No.	Name of the Project	Location Province / Country	Client
19	Feasibility Study and Detail Design of NHA Residential Complex at M-1/M-2 Intersection Loop, Islamabad	Islamabad	National Highway Authority (NHA)
20	Detail Design of Bahria Agro Lake at Bahria Town Islamabad	Islamabad	Bahria Town
21	Architectural & Structural Design of Girls School for Deaf and Dumb at Yakatoot, Peshawar City	Peshawar, KPK	C&W Department, KPK

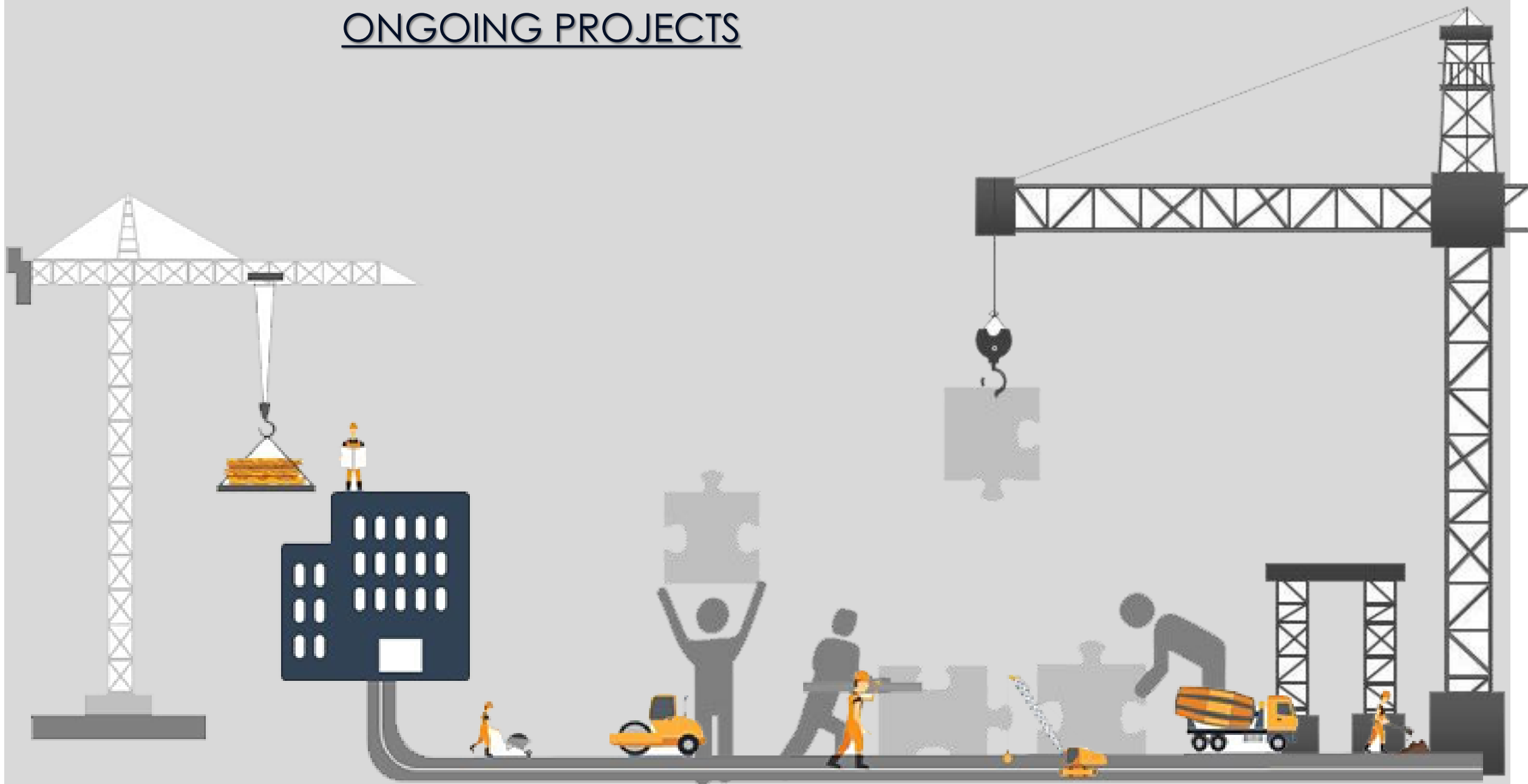


## EXECUTED PROJECTS



Sr. No.	Name of the Project	Location Province / Country	Client
25	Analysis & Design of Slope Stability Measures at Bahria Resort at Khaira Gali.	Khaira Gali, District Abbottabad, KPK	M/s Bahria Town Islamabad.
26	Slope Stability and Road Design of R-09.	Bahria Golf, Bahria Town, Islamabad	M/s Bahria Town Islamabad.
27	Slope Stability and Road Design along Main Boulevard.	Agro Farms, Bahria Town, Islamabad	M/s Bahria Town Islamabad.

# ONGOING PROJECTS





## ONGOING PROJECTS



Sr. No.	Name of the Project	Location Province / Country	Client
1	Construction Supervision and Contract Administration for Development of National Highway Foundation Housing Scheme (NHF-HS) in Islamabad	Kahuta Road, Islamabad	National Highway Authority (NHA)
2	Consultancy Services for Design Review/ Vetting of Leswa Bypass Road Length 13 Km (Damaged Portion) Incl. Bridges/ Allied Structures, District Neelum	District Neelum, AJK	Central Design Office, GoAJK
3	Consultancy Services for Feasibility Study & Detailed Design for Construction of CPEC Interchange for Chhab on Already Constructed Overhead/ Flyover at Maira Sharif along with its Link Road from Interchange to Chhab, Nilhad & Maira Sharif	D.I.Khan Motorway	National Highway Authority (NHA)

## ONGOING PROJECTS



Sr. No.	Name of the Project	Location Province / Country	Client
4	Consultancy Services for Feasibility Study and Detailed Design for Rehabilitation/ Upgradation and Widening of Quetta – Dhadhar Section of N-65 (118.322 Km) Approx.	Quetta - Dhadhar N-65	National Highway Authority (NHA)
5	Consultancy Services for Feasibility Study & Detailed Design for Dualization / Strengthening of Dhadar – Jacobabad Section N-65 (188 Km Approx.)	Dhadar – Jacobabad N-65	National Highway Authority (NHA)
6	Consultancy Services for Feasibility Study and Detailed Design for Construction of Khwazakhela – Besham Expressway (64 Km)	Khwazakhela – Besham KPK	National Highway Authority (NHA)



## ONGOING PROJECTS



Sr. No.	Name of the Project	Location Province / Country	Client
7	Consultancy Services for Design, Review and Construction Supervision of Bhong Interchange on Sukkur – Multan Motorway (M-5) at its Intersection with Bhong – Sadiqabad Road (Km 520+130)	Sukkur – Multan Motorway M-5	National Highway Authority (NHA)
8	Consultancy Services for Design, Review and Construction Supervision of Mirpur Mathelo Interchange on Sukkur – Multan Motorway (M-5) at Km 462+540 & its Link with National Highways (N-5) / G.T. Roads (5.5 Km)	Sukkur – Multan Motorway M-5	National Highway Authority (NHA)
9	Consultancy Services for Design of Kayal Bridge at Km 266+000 on N-35	N-35 KPK	National Highway Authority (NHA)

OUR DEDICATED STAFF &  
SATISFIED CLIENTS





# KEY STAFF



	DIVISION	NAME	DESIGNATION	QUALIFICATION
a.	MANAGEMENT	Dr. Babar Khan	Chief Executive Officer	PhD (Civil Engineering)
b.	MANAGEMENT	Engr. Madiha Saeed	Managing Director	MSc (Transportation Engineering)
c.	TOWN PLANNING & ARCHITECTURE	Ar. Sumaira Ilyas Ar. Innam-ullah	Senior Architect Principal Architect	BSc (Architecture) BSc (Architecture)
d.	STRUCTURE SECTION	Engr. Saboor Ahmed Engr. Areeba	Structure Engineer Structure Engineer	BSc (Civil Engineering) MSc (Civil Engineering)
e.	GEO TECHNICAL SECTION	Ms. Komal Raiz Mr. Saif Ali Mr. Mubashir	Principal Engineer Geologist Geologist	MSc (Geotech) BSc (Geology) BSc (Geology)
f.	HIGHWAY SECTION	Engr. Haroon Rasheed Engr. Umar Waqas	Principal Engineer Senior Engineer	MSc (Transportation) MSc (Transportation)
g.	Electrical & Mechanical (E&M) SECTION	Engr. Abu Bakar Mr. Makhdoom Sibghatullah	Senior Engineer Senior Technical Assistant	MSc (Electrical) DAE (Electrical)
h.	HYDROLOGY & HYDRAULICS SECTION	Engr. M. Nawaz Sharif	Senior Hydrologist	MSc (Water Resources)

# OUR CLIENTS





The text 'BK GROUP' is written in a large, bold, serif font on the side of a yellow container. Below it, 'PAKISTAN' is written in a smaller, all-caps, serif font. The container has a blue base and is situated on a dirt ground next to a piece of white machinery with tracks.

**BK GROUP**  
PAKISTAN

THANK YOU